

Why **SICCE**?

Synchronized pumps

- Synchronizes the impeller with the windings, so no dead spots
- Makes them quieter
- More efficient
- Cooler running
- Can work with all wave makers with no issues

Advanced technology

- The most advanced technology in the design of our products
- Makes them more efficient
- Makes them less expensive to run
- Does not release excess heat into the aquarium

We use a green resin to make our pumps

- Green resin costs more, but can withstand up to 40 degrees higher temperature
- This is above the shutoff point required by UL, so heat does not damage the pump or impeller

Independent pet stores are our future and we protect your selling price

- We put in place a M.R.P. (Minimum Retail Price)
- Not MAP, as it does not go far enough. Price can go lower at checkout
- MRP means even at check out, on line cannot go below our recommended retails
- This means on Sicce you can make the margin needed to stay in business and keep the hobby going!

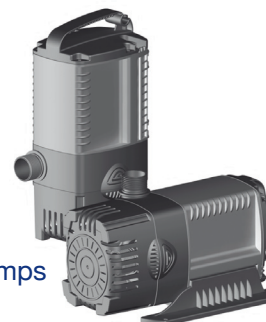
Although our prices to you the dealer are right in line with our competition, we will seem more expensive to the consumer, as you will be marking ours up 1.8-2 times your cost, where our competition you can not even mark up 1.5 in many cases! To combat this, we give you:

- The best technology
- Top quality products
- Energy efficient
- In less than one year they can re-coop the extra cost in electricity savings
- Quiet running pumps!

I think you will find the above bullets give you a good reason to support Sicce, a brand that gets behind the independent stores that keep our hobby going.



Voyager HP Pumps



Syncra HF Pumps



Syncra SILENT Pumps



Voyager 1, 2, 3, 4 and HP
Stream & Current Pumps



Green Reset 25
Pond Filter

Green Reset 40
Pond Filter

Sicce USA FAQ

It feels like higher flow is coming out of the stream pumps I have now when I put my hand on them. Why?

We do very exact testing and it is important to check the flow 4 inches and up to 4 feet away. In most cases, our Voyagers push more water and seem better to the “feel” at some distance compared with other similar pumps. No other pump compares to our Voyager HP series.

Is the flow general enough on the Voyager 2-4?

In fact, corals respond great to the models and the flow is rotating and can be flared up to 2 feet wide. Just put some frozen food or plankton in the stream and see. Our videos demonstrate this great feature.

Many pumps claim to be timer safe. Why is Sicce different?

Syncra and Voyager models have no mechanical stop or clutch. Better electronics and sound engineering make them timer safe without damaging the pump. Turning in the correct direction on startup is one thing, but not damaging the pump over the long term with timing intervals of 4 seconds is another. Sicce can do it.

Why do I need another pump or filter line with so many out there?

Sicce is not just another pump line. We offer innovative products and best-in-class pump technology. By partnering with Sicce and making a commitment to sell a quality product, you are doing the best thing for your customers while preserving your margins and your business. We back it up with warranties up to 5 years and an authorized dealer support website.

My margin is low on XYZ, but it sells. Why should I switch?

The better question is, why do you settle for that? Have your business expenses gone down? Have your volumes increased? Is work easier than it use to be? What is your margin on electric items now? Are you happy with that? If not, do something about it. We are.

Why do you have min retail price contracts?

This is done to protect out dealers and customers. We want dealers to have the margins required to provide the best customer service and information needed for customers to understand how and why Sicce is a better choice.

Money is tight and I cannot afford to add another line.

Can you afford not to have different lines? Selling products just because customers ask for them does not always make sense. It only does when they are truly best in class and can support your business and the service they demand. Stop making sales for companies selling products at your cost. Make a change that helps you and your customers.

“I decided to buy one to try it out and have to say that so far, I’m impressed. So far in operation, the repeated startup on my wave maker is completely as advertised. I cannot hear a thing other than the whir of the impeller spinning in the water. I am quite happy with that.” Zreef

“The most silent pump I have ever owned!!
GET IT!” Adam, Tracy CA

“I appreciate your help - good help is hard to find these days - thanks.” Sydney Meek

“We replaced our existing lines with Sicce. Now we can sell top quality and have great tech support. This puts us on the even playing field we need.”
Scott Gregory Aquarium TN

“I know Sicce is a great line; we sell them above everything, but the true gem is I know Ralph cares about my business and my customers.”
Chris Deer Tideline Aquatics SC

“Sicce Voyager HP 10 pushes some serious flow with force - flow speeds of 15-18’ per second! We love the strong magnets which can hold the pump on glass 3/4” thick. The bracket allows the pump to be angled 180 degrees so the pump can ride the back glass but be pointed down the length of the tank, as it should be. Finally, the dual ceramic bearings of the three-bladed impeller make it dead-silent, also as it should be..”
Jake Adams Reefbuilders.com

“I wanted to thank you for the videos on the Green Reset Filters. The response from customers has been great and Sicce will do very well and so will we with the line. I look forward to the new larger pumps.” Dan Wiles Landscaping Company



technology for water applications

Telephone 865-291-3202 • FAX 865-291-3203
www.sicceus.com • sales@sicceus.com